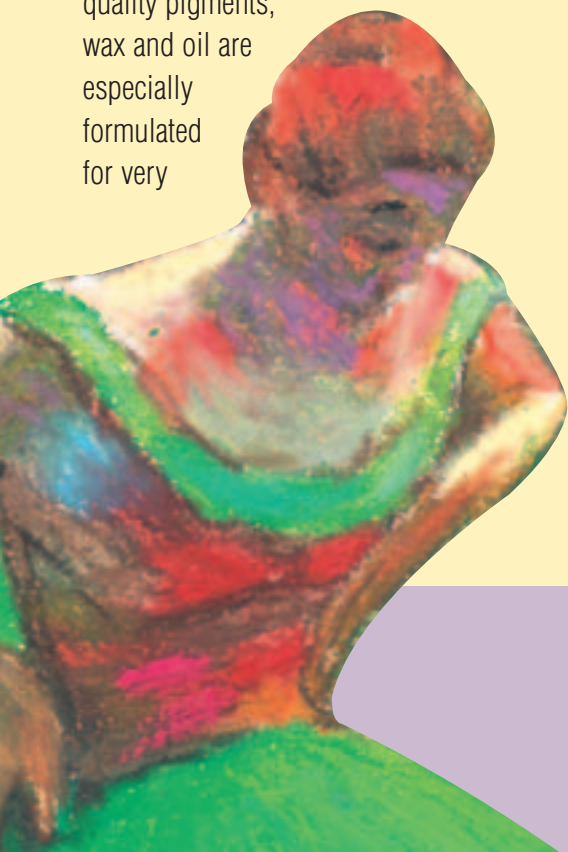


**CRAY-PAS®**

# EXPRESSIONIST™

## Extra Fine Quality Oil Pastels

Cray-Pas Expressionist Oil Pastels are the standard from which all other oil pastels are measured. The extra fine quality pigments, wax and oil are especially formulated for very



smooth drawing, and a wide range of effects - from bold intense strokes to soft subtle shading. The Cray-Pas Expressionist series is widely accepted and recognized by high schools, hobbyist, and artist worldwide.

The bright, vivid colors are suitable for many surfaces: paper, cardboard, canvas, wood, etc. Our "jumbo" size stick is ideal for adult size hands.

The balanced 48 color range is ideal for portraits, landscapes, still life and abstracts. In addition, each Cray-Pas Expressionist color is individually light-fast rated.

A unique oil pastel medium; the Cray-Pas extender" is offered in the assortment. This is a colorless oil pastel which aids in the further extension of any Expressionist color for the infinite continuation of color hues.

Cray-Pas Expressionist series is certified by ACMI (Art & Creative Materials Institute) and carries the "CP" seal of approval.



### Features

- Bright and vivid colors
- Good lightfastness
- Extremely smooth and easy to apply
- Suitable for many surfaces: paper, cardboard, canvas and wood
- Balanced color range; portraits, landscapes, still life, abstracts
- Different unique techniques and applications are possible: stenciling, scratching, color mixing, blending, impasto's and dotting
- Very good color extension
- Cray-Pas Color Extender provides unlimited possibilities for the extension of colors.

Available in sets of 12, 16, 25, 36 and 50, pieces. All 48 colors and extender are available individually by open stock.






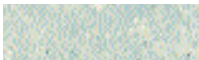







# EXPRESSIONIST

Extra Fine Quality Oil Pastels



## EXPRESSIONIST OIL PASTELS COLOR CHART

 Dark Rose available set: 36/50 XLP-122 ++	 Crimson available set: 50 XLP-022 -	 Red set: 12/16/25/36/50 XLP-019 ++	 Vermilion Hue available set: 25/36/50 XLP-018 +++	 Scarlet available set: 50 XLP-006 +	 Orange sets: 12/16/25/36/50 XLP-005 +
 Yellow Orange available set: 25/36/50 XLP-105 ++	 Deep Yellow available set: 50 XLP-004 +++	 Yellow set: 12/16/25/36/50 XLP-003 ++	 Lemon Yellow available set: 25/36/50 XLP-002 +++	 Yellow Green set: 12/16/25/36/50 XLP-027 +++	 Green set: 12/16/25/36/50 XLP-029 +++
 Turquoise Green available set: 50 XLP-129 ++	 Viridian Hue available set: 36/50 XLP-031 +++	 Blue Green available set: 50 XLP-131 0	 Deep Green available set: 25/36/50 XLP-030 +	 Olive available set: 50 XLP-134 +++	 Green Gray available set: 25/36/50 XLP-046 +
 Olive Green available set: 36/50 XLP-234 +++	 Pale Green available set: 36/50 XLP-128 -	 Emerald Green available set: 36/50 XLP-026 ++	 Pale Blue available set: 16/25/36/50 XLP-125 ++	 Cerulean Blue available set: 36/50 XLP-025 ++	 Blue sets: 12/16/25/36/50 XLP-036 ++
 Ultramarine available set: 25/36/50 XLP-038 ++	 Prussian Blue available set: 25/36/50 XLP-043 ++	 Violet available set: 50 XLP-023 ++	 Purple sets: 12/16/25/36/50 XLP-024 0	 Light Purple available set: 25/36/50 XLP-124 -	 Pink sets: 12/16/25/36/50 XLP-020 +
 Dark Pink available set: 50 XLP-120 +	 Rose Gray available set: 36/50 XLP-048 +++	 Salmon Pink available set: 36/50 XLP-107 +	 Pale Orange sets: 12/16/25/36/50 XLP-007 +	 Naples Yellow available set: 50 XLP-009 ++	 Raw Sienna available set: 50 XLP-110 +++
 Yellow Ochre set: 16/25/36/50 XLP-015 +++	 Olive Brown available set: 25/36/50 XLP-047 +++	 Burnt Sienna available set: 50 XLP-112 +++	 Brown sets: 12/16/25/36/50 XLP-012 +++	 Vandyke Brown sets: 16/25/36/50 XLP-017 +++	 Sepia available set: 36/50 XLP-117 +++
 Black sets: 12/16/25/36/50 XLP-049 +++	 Gray sets: 16/25/36/50 XLP-044 +++	 Dark Gray available set: 50 XLP-144 +++	 White sets: 12/16/25/36/50 XLP-050 +++	 Gold available set: 36/50 XLP-051 +++	 Silver available set: 36/50 XLP-053 +++



Lightfastness Rating +++ = excellent ++ = very good + = fair 0 = poor - = fugitive  
The Extender (XLP-00) is available in the 50 set and open stock and has a - lightfastness rating.

This color chart is produced within the limitations of color printing and differs from the actual colors slightly.